

GAT

Excellence By Design

- Privately owned
- Fenton, Missouri
- Manufacturing Finishing Systems since 1959
- UL Panel Shop
- FM/NFPA Compliant
- CCAI Corporate Member-Gold level
- FabTech Exhibitor



GAT Ovens

- Dry Off
- Cure
- Combination
- Infrared
- Batch
- Dual use liquid or Powder



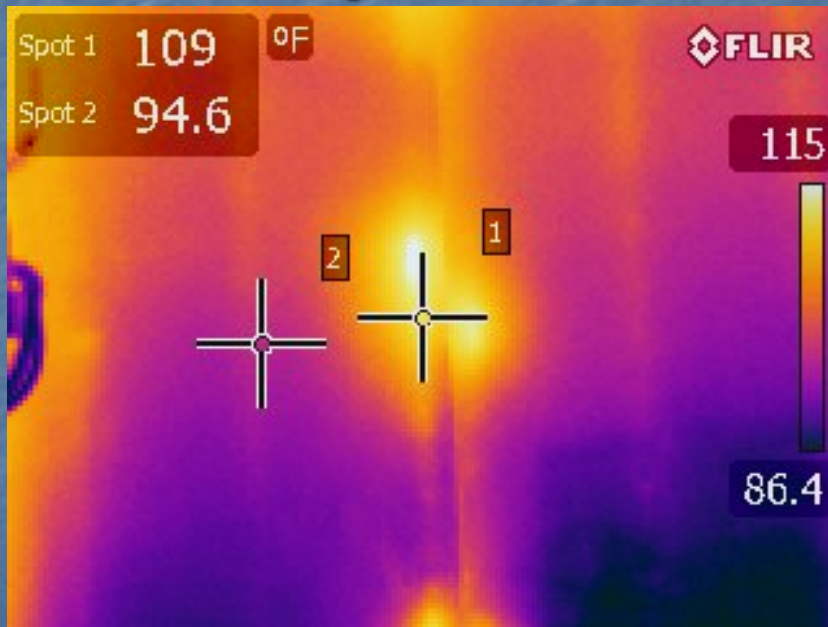
GAT Convection Ovens

- 6" thick, 4# density batt mineral wool insulated panels
- 48" wide panel
- 45% fewer seams
- Isolated spreader clip and stiffener channel construction in lieu of roll formed design
- Decreases thru steel by 90%
- VFD controlled exhaust fan

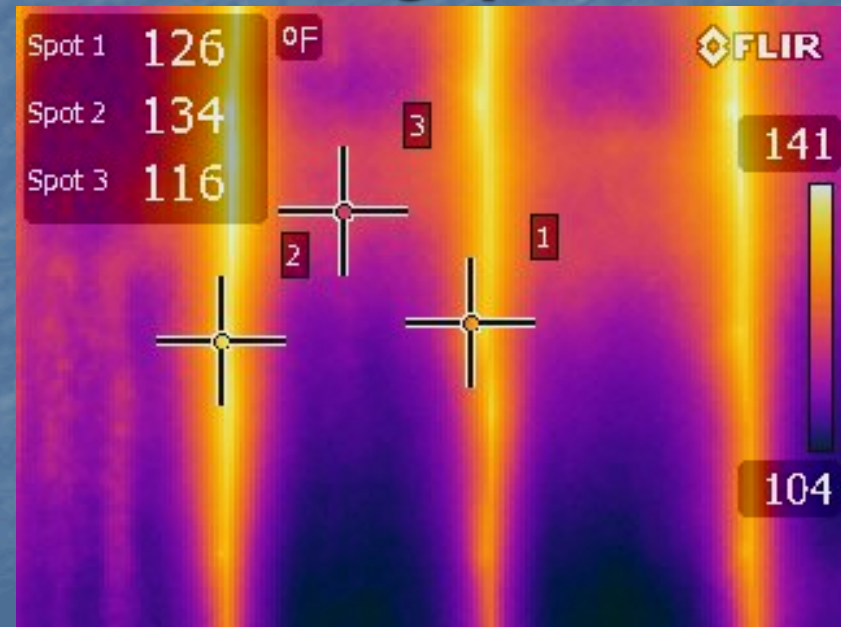


A picture is worth

GAT oven panel



The 'other' guys



Innovative Design

- 48" wide Panel Design
- 40% Fewer Seams
- 90% Less Thru Steel
- 6" Thick, 4# Mineral Wool Insulation
- Tongue and Groove Assembly
- 18 ga Galvaneal Steel



Fully Cure or Dry the Part

- 3" Thick Insulated Floor
- Floor Mounted Ductwork
- Appropriate Louver Location
- Top for dry off and sides for cure
- 4"x4" internal structural support
- Ductwork has 18 ga exterior with 12 ga Internal Frame



GAT Patented Air Seals

- Pressurized ductwork surrounds work opening
- Top 2/3 directs air back into oven
- Bottom 1/3 directs air out towards plant
- Minimizes thermal leakage
- Maintain uniformity of temperature of the oven



Meeting the Highest Standards

- FM volume 6-9, UL, NFPA 86 compliant gas train
- Top or Side Mount Heater Location
- Hi Limit Controller and Flame Safety
- Modulating burners with electrically ignited pilot
- Eclipse flame safety
- Honeywell UDC temperature controller



GAT Infrared Ovens

- Gel
- Boost
- Combination
- Two coat applications
- Zoned control for output and work opening
- PLC control



GAT Batch Ovens

- 18 standard sizes
- Double door option
- Top, end or side mounted heater
- Conveyor slots
- 12 ga plate or insulated floor design
- 6" thick oven panel



Putting It All Together

Teamwork

- Project engineer
- Pre-design site visit
- Approval drawings
- Bound and electronic engineering documentation
- Spare parts list
- Online support
- Parts and Labor warranty

Capitalizing on our strengths

- 49 years manufacturing experience
- Custom design
- Experienced sales engineers
- Experienced designers
- Experienced manufacturing
- Family owned and operated
- Strongest warranty in the industry