

**Electrical Requirements:**

ALL INFORMATION PROVIDED BY COL-MET SPRAY BOOTHS AS TO ELECTRICAL REQUIREMENTS IS INTENDED INFORMATIONAL PURPOSES ONLY. COL-MET DOES NOT EMPLOY A LICENSED ELECTRICIAN AND, THEREFORE, MAKES NO CLAIM, EXPRESSED OR IMPLIED, AS TO THE ACTUAL ELECTRICAL CURRENT REQUIREMENTS. IT IS THE CUSTOMERS RESPONSIBILITY TO VERIFY AND DISCUSS ALL ELECTRICAL COMPONENTS WITH A QUALIFIED INDIVIDUAL.

Suggested Total System Amperes: **32** @ 208V/ 3 Ph/ 60Hz

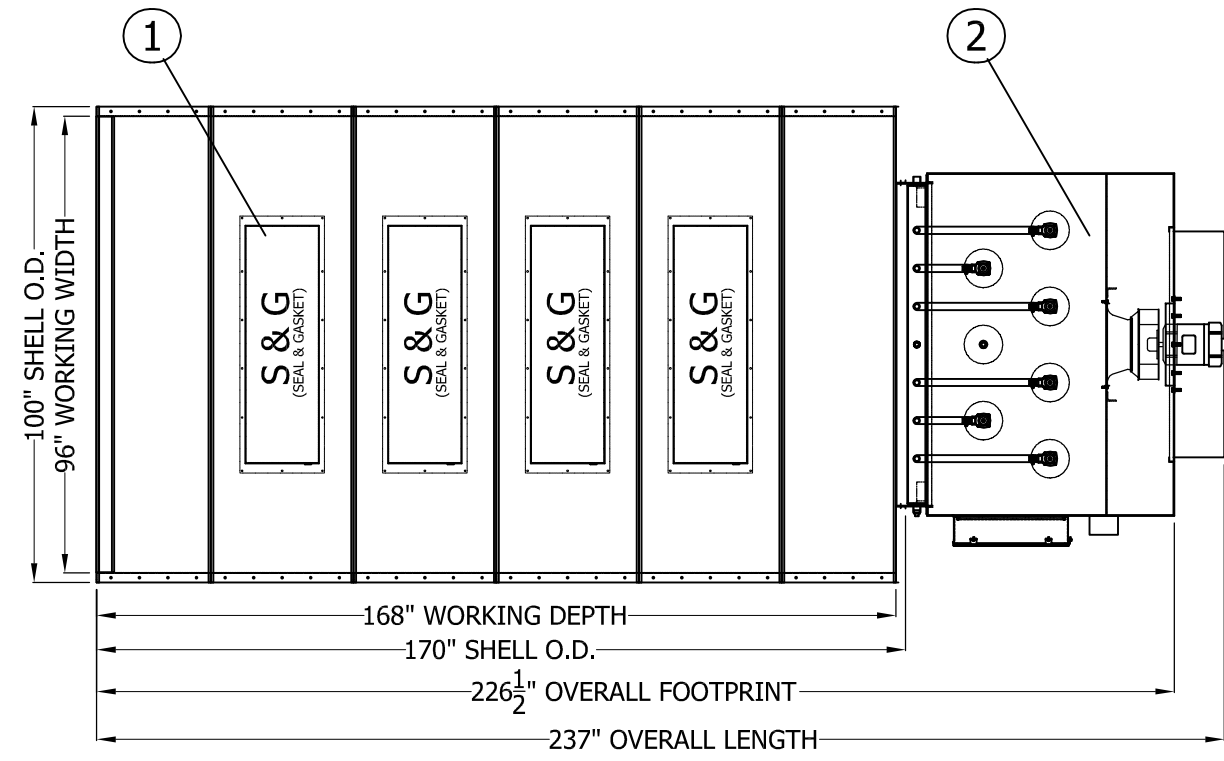
Suggested Total Lighting Amperes: **6** @ 120V/ 1 Ph/ 60Hz

**APPROVAL DRAWING**

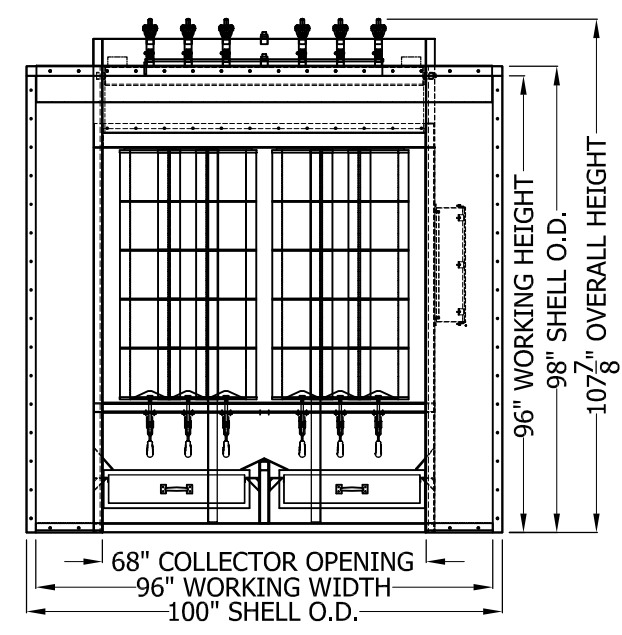
- APPROVED
  - DIS-APPROVED
  - APPROVED AS NOTED
  - REVISE AND RESUBMIT
- MANUFACTURING WILL BEGIN WHEN APPROVAL HAS BEEN SIGNED AND RETURNED.

SIGNATURE: \_\_\_\_\_  
 PLEASE SIGN THE APPROVAL DRAWING. MAKE ANY NOTES TO THE DRAWING THAT MAY AFFECT THE ORDER AND RETURN A COPY TO COL-MET SPRAY BOOTHS. NOTE THAT ANY CHANGES TO THE DRAWING MAY EFFECT CHARGES, DELAY IN THE APPROVAL PROCESS, AND DELAY THE PRODUCTION OF YOUR ORDER.

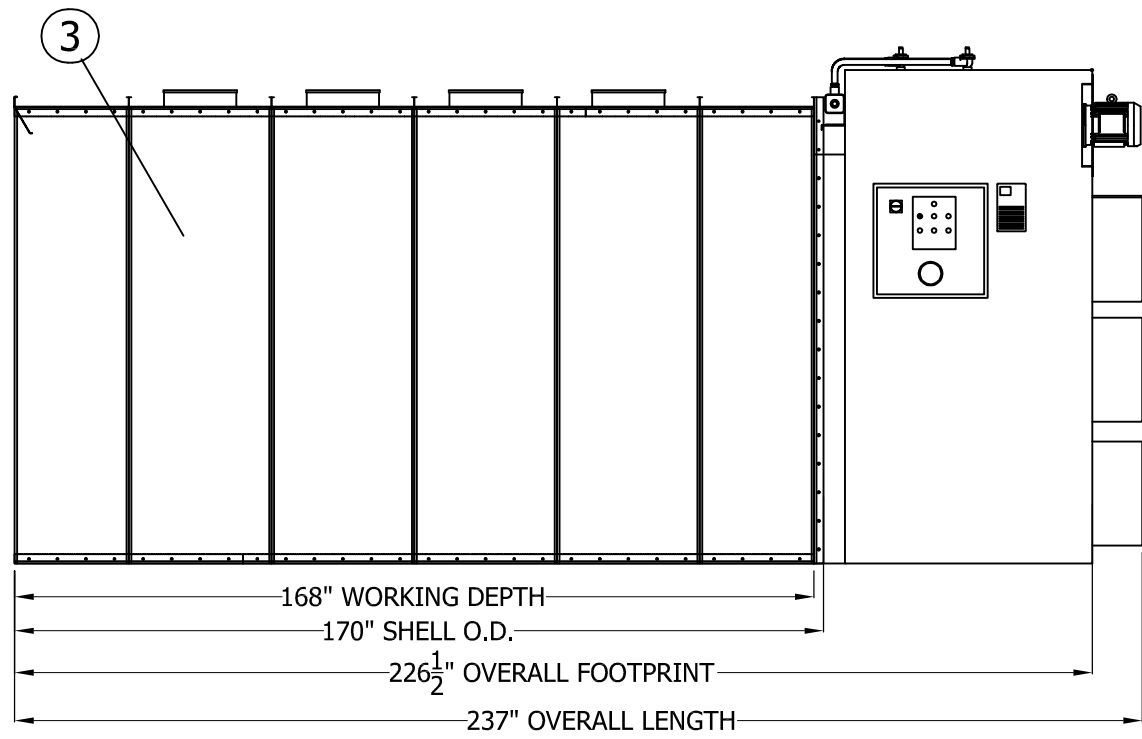
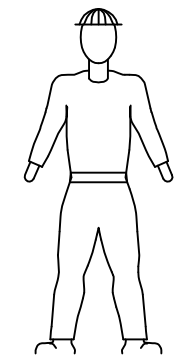
ITEM	QTY.	PART NUMBER	DESCRIPTION
1	4		LIGHT FIXTURES; FOUR TUBE 48"; 32 WATT FIXTURES MOUNTED BEHIND CLEAR TEMPERED GLASS PANES, "UL" RATED FOR THEIR INTENDED USE & PLACEMENT, (4 CLASS 1, DIVISION 2, S&G TYPE, INSIDE ACCESS)
2	ONE	RPC-6000	6,000 CFM COLLECTOR (SEE SHEET 2 OF 2 FOR DETAILS)
3	ONE		18 GA. GALV. STEEL SHELL



**PLAN VIEW**



**FRONT ELEVATION**



**RIGHT ELEVATION**

ADDITIONAL DUCTWORK SUPPORT TO SUIT FIELD CONDITIONS TO BE SUPPLIED BY OTHERS.  
 ALL ANCHOR BOLTS TO BE SUPPLIED BY OTHERS.

COL-MET SPRAY BOOTHS ARE MANUFACTURED IN ACCORDANCE WITH NFPA-33.  
 BOOTH WALLS & CEILING PANELS FABRICATED OF 18 GA. GALVANIZED STEEL IN ACCORDANCE WITH NFPA-33 CHAPTER 5.1.4.  
 SEE ORDER ACKNOWLEDGEMENT FOR COMPLETE LIST OF PROVIDED STACK, AND OPTIONAL COMPONENTS.

**IMPORTANT NOTICE:**  
 IN THE CONSTRUCTION OF THIS BOOTH THERE MAY BE POSSIBLE FIELD MODIFICATIONS BY THE INSTALLER. THESE MODIFICATIONS MAY INCLUDE, BUT ARE NOT LIMITED TO:

- WELDING
- CUTTING
- NOTCHING
- DRILLING

**GENERAL NOTES:**

- WORK CHAMBER WILL BE BOLTED CONSTRUCTION WITH 5/16" BOLTS ON STANDARD 6" CENTERS
- WORK CHAMBER TO BE 18 GA. GALVANIZED UNPAINTED SHEET METAL EXCEPT AS NOTED.
- ALL MOTOR CONTROLS, SWITCHES, LIGHT LAMPS OR TUBES, INCLUDING CONNECTIONS TO EQUIPMENT TO BE FURNISHED AND INSTALLED BY CUSTOMER EXCEPT AS NOTED.
- AMPLE AIR MAKE-UP AND AIR SPACE WITHIN FRONT OF BOOTH MUST BE PROVIDED IN ORDER TO INSURE PROPER OPERATION OF BOOTH.
- ALL LOCAL, CITY, & STATE PERMITS AND INSURANCE APPROVAL TO BE OBTAINED BY CUSTOMER.
- CUSTOMER TO FURNISH ROOF PITCH, STACK QUANTITY AND CONFIGURATION IF REQUIRED.

For information on installation of the booth and components, please see our web site at [www.colmetsb.com](http://www.colmetsb.com), click on "Resources" on the left side of the page, and then click on "Install Manual".

CONFIDENTIAL PROPRIETARY NOTICE  
 THIS DRAWING, THESE SPECIFICATIONS, AND THE IDEAS CONTAINED HEREIN ARE THE EXCLUSIVE PROPERTY OF COL-MET SPRAY BOOTHS. THEY SHALL BE RETURNED UPON DEMAND. NO PERSON SHALL COPY, USE, OR DISCLOSE THIS DRAWING, THESE SPECIFICATIONS, OR THE IDEAS CONTAINED HEREIN WITHOUT THE EXPRESS CONSENT OF COL-MET SPRAY BOOTHS. IT IS THE RESPONSIBILITY OF THE RECIPIENT TO CHECK ALL DETAIL INFORMATION AGAINST THE CONTRACT DOCUMENTATION. COL-MET SPRAY BOOTHS ACCEPTS NO LIABILITY OR RESPONSIBILITY FOR ANY LOSE OR DAMAGE SUFFERED AS A RESULT OF (OR CONNECTED WITH) THE USE OR MISUSE OF THE CAD DATA SUPPLIED FOR INFORMATION ONLY. ONCE THE DATA IS INTRODUCED INTO YOUR OWN CAD OR OTHER SYSTEM, COL-MET SPRAY BOOTHS CAN TAKE NO RESPONSIBILITY FOR IT'S ACCURACY.

COL-MET SPRAY BOOTHS  
 1635 INNOVATION DR.  
 ROCKWALL, TEXAS 75032  
 PHONE (972) 772-1919  
 FAX (972) 772-1833  
 WWW.COLMETSB.COM

JOB #:

APPROVAL BY: **STM**

DATE: **10/06/10**

DETAILED BY: **N/A**

DATE: **N/A**

ORDER DATE: **10/01/10** RO

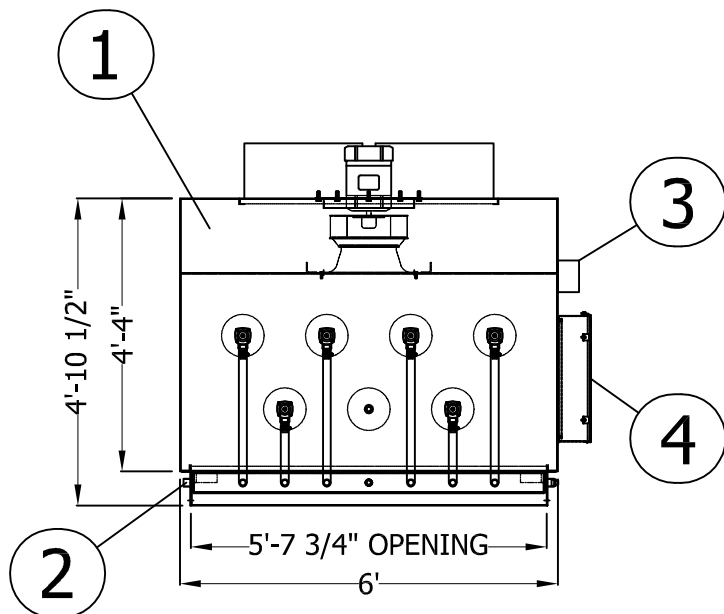
**APPROVAL DRAWING**

- APPROVED
  - DIS-APPROVED
  - APPROVED AS NOTED
  - REVISE AND RESUBMIT
- MANUFACTURING WILL BEGIN WHEN APPROVAL HAS BEEN SIGNED AND RETURNED.

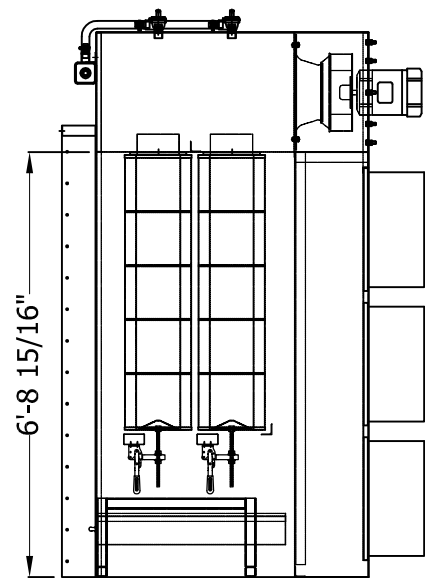
SIGNATURE: \_\_\_\_\_

PLEASE SIGN THE APPROVAL DRAWING. MAKE ANY NOTES TO THE DRAWING THAT MAY AFFECT THE ORDER AND RETURN A COPY TO COL-MET SPRAY BOOTHS. NOTE THAT ANY CHANGES TO THE DRAWING MAY EFFECT CHARGES, DELAY IN THE APPROVAL PROCESS, AND DELAY THE PRODUCTION OF YOUR ORDER.

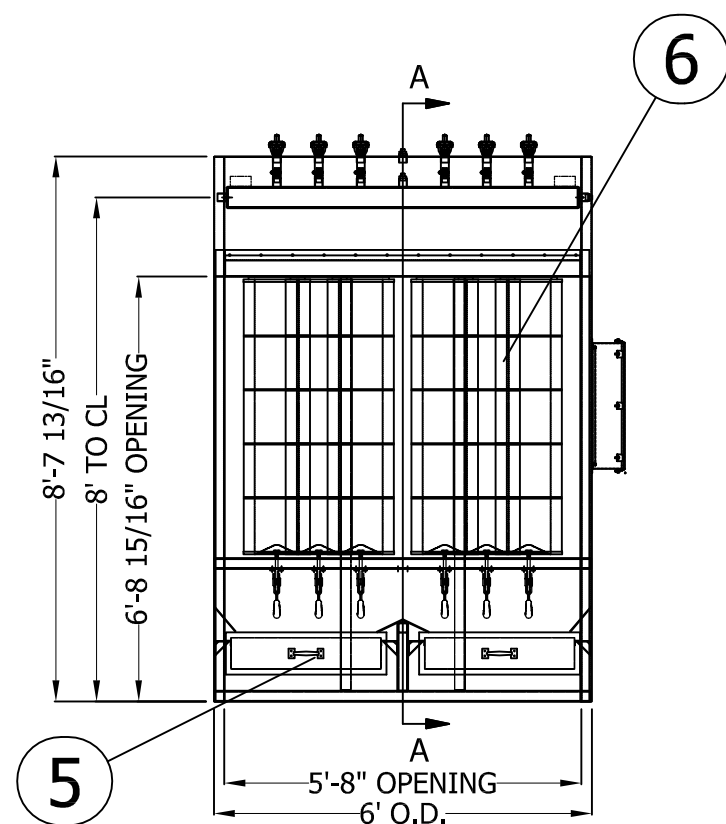
ITEM	QTY.	PART NUMBER	DESCRIPTION
1	ONE	RPC-6000	RECLAIM CARTRIDGE POWDER COLLECTOR: RECLAIM TRAYS QTY. (2) CARTRIDGE FILTERS QTY. (6) FINAL FILTERS QTY. (6)
2			AIR REQUIREMENTS: 10 SCFM MAX @ 50-80 PSI CLEAN, DRY AIR
3	ONE		VARIABLE FREQUENCY DRIVE
4	ONE		CONTROL PANEL; RIGHT SIDE
5	2		POWDER RECLAIM TRAYS
6	6		CARTRIDGE FILTERS; 12 3/4"Ø X 52"
7	6		PULSE VALVES; FACTORY SET FOR 120 SECOND INTERVALS, 1/10 SECOND DURATION
8	1 LOT		FAN AND MOTOR: 16.5"Ø WHEEL AND CONE QTY. (1) 7.5 HP C-FACE TEFC MOTOR RATED 6,000 CFM @ 3" S.P. QTY. (1)
9	6		FINAL EXHAUST FILTER; 24" X 24" X 12"
10	ONE		CABINET CONSTRUCTED OF WELDED 10 GA. MILD STEEL, POWDER COATED WHITE



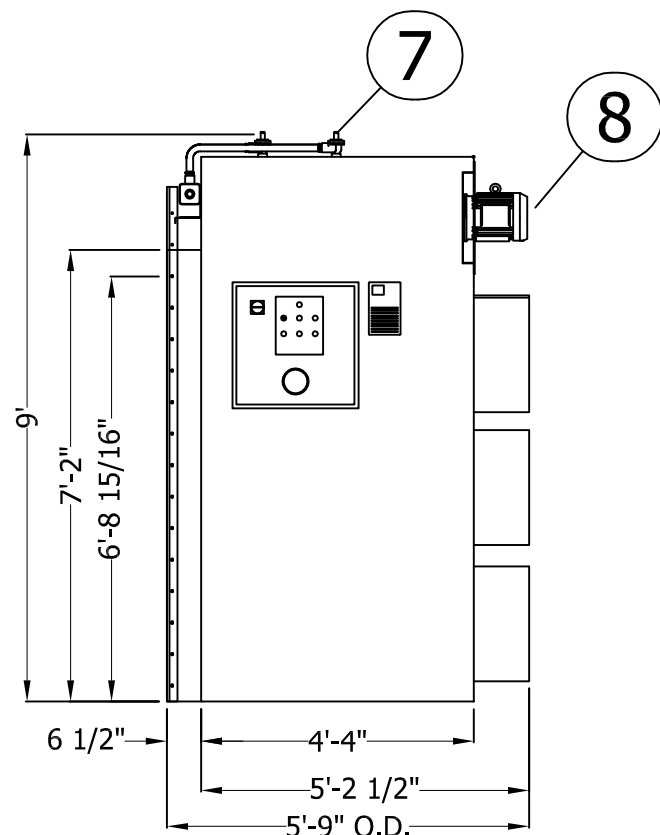
**PLAN VIEW**



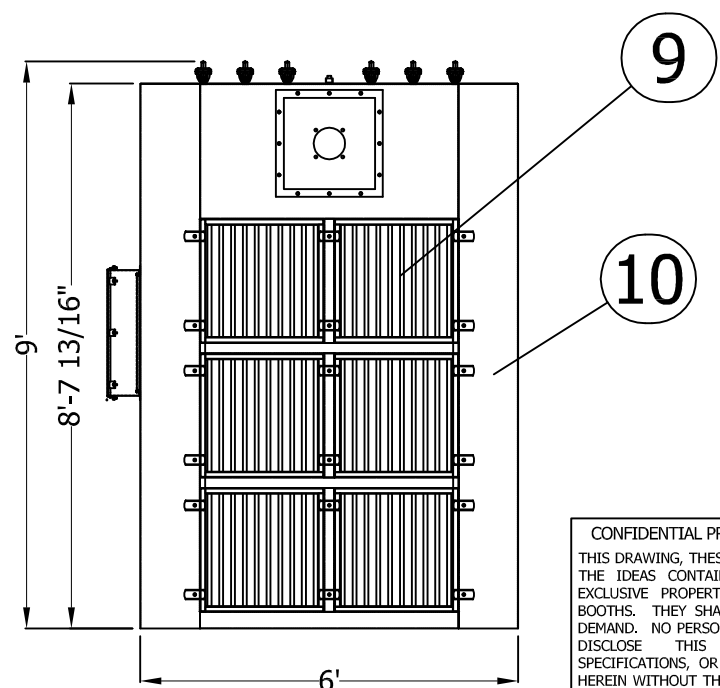
**SECTION AT A-A**



**FRONT VIEW**



**SIDE ELEVATION**



**REAR VIEW**

**POWDER  
COATED  
WHITE**

ADDITIONAL DUCTWORK SUPPORT TO SUIT FIELD CONDITIONS TO BE SUPPLIED BY OTHERS.  
ALL ANCHOR BOLTS TO BE SUPPLIED BY OTHERS.

COL-MET SPRAY BOOTHS ARE MANUFACTURED IN ACCORDANCE WITH NFPA-33.  
BOOTH WALLS & CEILING PANELS FABRICATED OF 18 GA. GALVANIZED STEEL IN ACCORDANCE WITH NFPA-33 CHAPTER 5.1.4.

SEE ORDER ACKNOWLEDGEMENT FOR COMPLETE LIST OF PROVIDED STACK, AND OPTIONAL COMPONENTS.

**IMPORTANT NOTICE:**  
IN THE CONSTRUCTION OF THIS BOOTH THERE MAY BE POSSIBLE FIELD MODIFICATIONS BY THE INSTALLER. THESE MODIFICATIONS MAY INCLUDE, BUT ARE NOT LIMITED TO:

- WELDING
- CUTTING
- NOTCHING
- DRILLING

- GENERAL NOTES:**
1. WORK CHAMBER WILL BE BOLTED CONSTRUCTION WITH 5/16" BOLTS ON STANDARD 6" CENTERS
  2. WORK CHAMBER TO BE 18 GA. GALVANIZED UNPAINTED SHEET METAL EXCEPT AS NOTED.
  3. ALL MOTOR CONTROLS, SWITCHES, LIGHT LAMPS OR TUBES, INCLUDING CONNECTIONS TO EQUIPMENT TO BE FURNISHED AND INSTALLED BY CUSTOMER EXCEPT AS NOTED.
  4. AMPLE AIR MAKE-UP AND AIR SPACE WITHIN FRONT OF BOOTH MUST BE PROVIDED IN ORDER TO INSURE PROPER OPERATION OF BOOTH.
  5. ALL LOCAL, CITY, & STATE PERMITS AND INSURANCE APPROVAL TO BE OBTAINED BY CUSTOMER.
  6. CUSTOMER TO FURNISH ROOF PITCH, STACK QUANTITY AND CONFIGURATION IF REQUIRED.

For information on installation of the booth and components, please see our web site at [www.colmetsb.com](http://www.colmetsb.com), click on "Resources" on the left side of the page, and then click on "Install Manual".

**CONFIDENTIAL PROPRIETARY NOTICE**  
THIS DRAWING, THESE SPECIFICATIONS, AND THE IDEAS CONTAINED HEREIN ARE THE EXCLUSIVE PROPERTY OF COL-MET SPRAY BOOTHS. THEY SHALL BE RETURNED UPON DEMAND. NO PERSON SHALL COPY, USE, OR DISCLOSE THIS DRAWING, THESE SPECIFICATIONS, OR THE IDEAS CONTAINED HEREIN WITHOUT THE EXPRESS CONSENT OF COL-MET SPRAY BOOTHS. IT IS THE RESPONSIBILITY OF THE RECIPIENT TO CHECK ALL DETAIL INFORMATION AGAINST THE CONTRACT DOCUMENTATION. COL-MET SPRAY BOOTHS ACCEPTS NO LIABILITY OR RESPONSIBILITY FOR ANY LOSE OR DAMAGE SUFFERED AS A RESULT OF (OR CONNECTED WITH) THE USE OR MISUSE OF THE CAD DATA SUPPLIED FOR INFORMATION ONLY. ONCE THE DATA IS INTRODUCED INTO YOUR OWN CAD OR OTHER SYSTEM, COL-MET SPRAY BOOTHS CAN TAKE NO RESPONSIBILITY FOR IT'S ACCURACY.



COL-MET SPRAY BOOTHS  
1635 INNOVATION DR.  
ROCKWALL, TEXAS 75032  
PHONE (972) 772-1919  
FAX (972) 772-1833  
WWW.COLMETS.COM

JOB #:  
APPROVAL BY: STM  
DATE: 10/06/10  
DETAILED BY: N/A  
DATE: N/A  
ORDER DATE: 10/01/10 RO