

CURE OVEN FAN SCHEDULE									
QTY.	LOCATION	MANUFACTURER	MODEL NO.	S.P.	D.W.	RPM	BLKP.	W.K.P.	
1	RECIRC. BLOWER		33" AIR KIT		27,000	----	----	45	
1	EXH. AIR SEAL FAN	TRIN CITY FAN	165 RCPL FAN	3 1/2"	2,500	----	----	3	
1	EXHAUST		120 RCX CONDUIT FAN	1 1/2"	1,500	----	----	1.5	
1	CAPTURE FAN		800-10-1 TUBE FAN	3 1/4"	1,000	----	----	1.0	

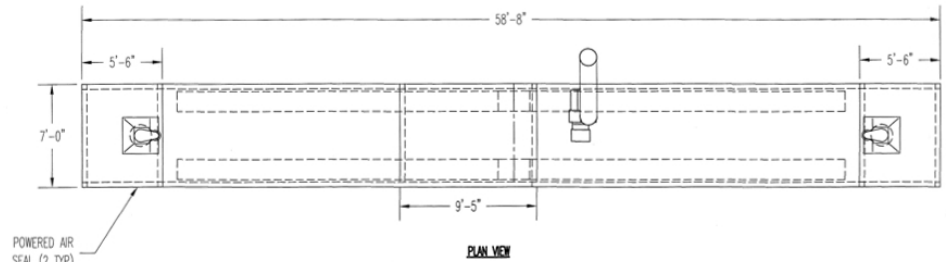
CURE OVEN BURNER SCHEDULE									
QTY.	LOCATION	DESCRIPTION	MANUFACTURER	MODEL NO.	INPLY B.L.G.	BURNER H.P.	GAS TRAIN		
1	BURNER	MADE-4103	WILSON	80-70P	2,000,000	1/2	MEETS F.A. APPROVAL		

- NOTES:**
- 1) BURNER CONTROL DESIGN SPEED 7 FPM TOTAL TIME OF 20 MINUTES.
 - 2) DESIGN TEMPERATURE RANGE 250F-500F.
 - 3) ALL PANELS TO BE 1/2" THICK WITH 4# DENSITY INSULATING AND TO BE CONSTRUCTED OF 20 GA. ALUMINUM STEEL ON THE INTERIOR & EXTERIOR.
 - 4) CUSTOMER TO PROVIDE NATURAL GAS TO GAS TRAIN CONNECTING AT A MINIMUM OF 3 P.S.I. AND A MINIMUM OF 5 P.S.I.

GENERAL CURE OVEN LAYOUT					
DATE	10-2-98	DWG. NO.	97-2924-300	SHEET	1
DRAWN BY	C. MURRAY	CHECKED BY		PROJECT NO.	97-2924
COMPANY					

CAD USER INFO			
FILE NAME:	20KX02.DWG	DATE	
PLOT:	LT	BY	
PLOT SCALE:	100% (1)		
SOFTWARE:	AutoCAD R13		

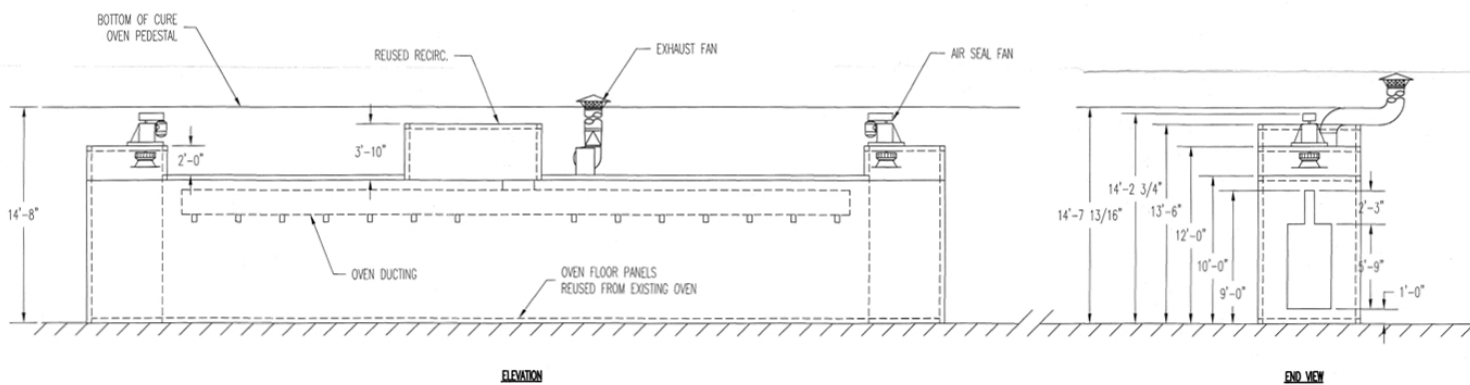




DRY-OFF OVEN FAN SCHEDULE									
QTY.	LOCATION	MANUFACTURER	MODEL NO.	S.P.	QFM	HPW	BLUP	WASP	
2	ENTRANCE AIR SEAL FAN	TRIN CITY FAN	100 ROCK FAN	2 1/2"	3,600			50	
1	RECIRC. BLOWER	EXISTING RECIRC. AND EXHAUST FANS REUSED							
1	EXHAUST								

DRY-OFF OVEN BURNER SCHEDULE									
QTY.	LOCATION	DESCRIPTION	MANUFACTURER	MODEL NO.	INPUT B.T.U.	BURNER H.P.	GAS TRAIN		
1	EXISTING BURNER	OVEN-FAN-4	MAVOR	400	1,500,000	1/3	EXISTING		

- NOTES:**
- 1) UNABLE CORROSION DESIGN SPEED 8 F.P.M. TOTAL TIME OF 7 MINUTES.
 - 2) DESIGN TEMPERATURE RANGE 200F-500F.
 - 3) ALL PANELS TO BE 1/4" THICK WITH #4 DENSITY INSULATION AND TO BE CONSTRUCTED OF 20 GA. ALUMINIZED STEEL ON THE INTERIOR & EXTERIOR.
 - 4) CUSTOMER TO PROVIDE NATURAL GAS TO GAS TRAIN CONNECTING AT A MINIMUM OF 3 P.S.I. AND A MINIMUM OF 5 F.P.S.I.



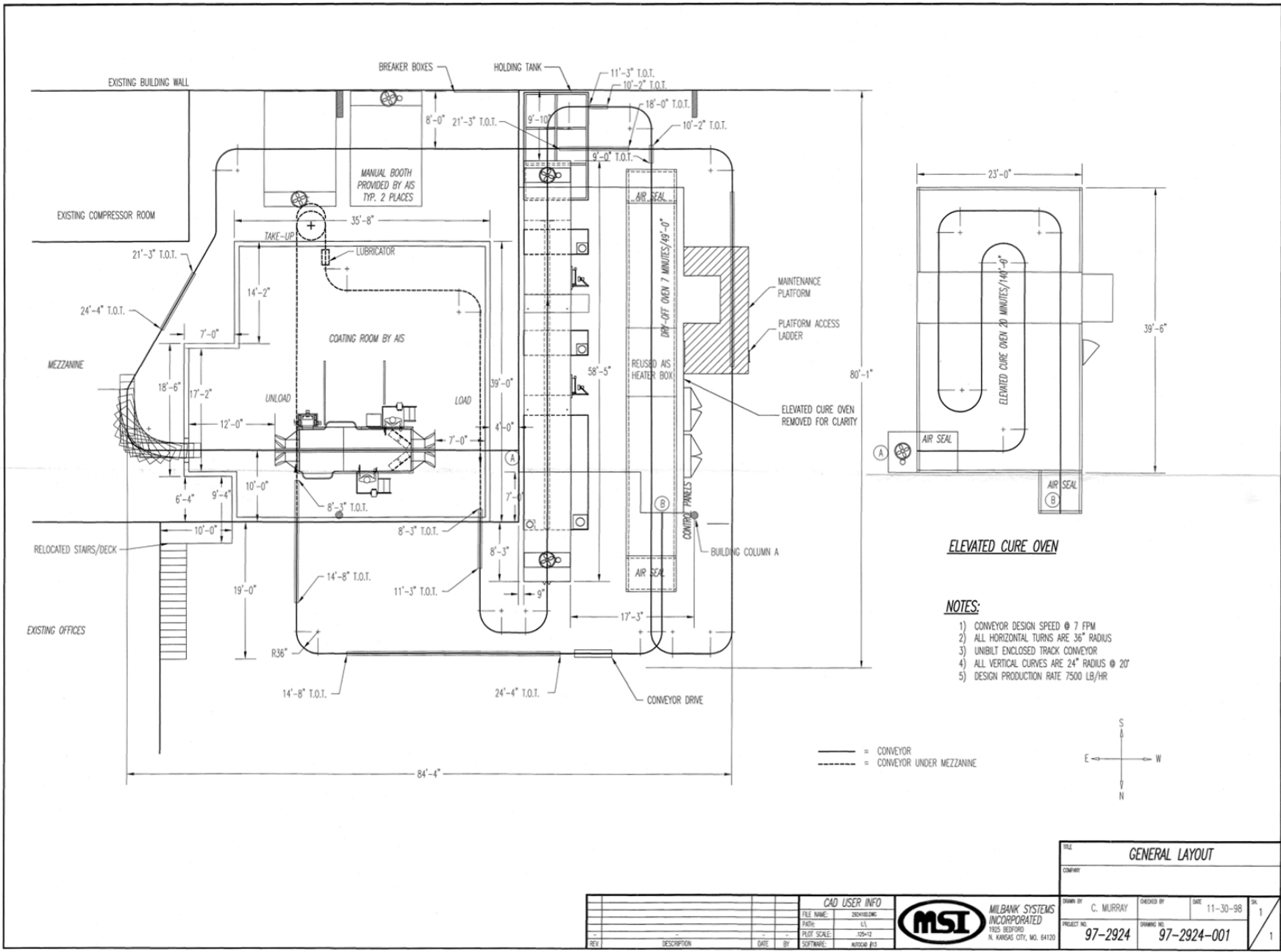
FILE				
GENERAL DRY-OFF OVEN LAYOUT				
COMPANY				
DRAWN BY	C. MURRAY	CHECKED BY	DATE	9-17-98
PROJECT NO.	97-2924	DRAWING NO.	97-2924-200	
REV.	DESCRIPTION	DATE	BY	SOFTWARE

CAD USER INFO				
FILE NAME:	DRYING.DWG			
PAGE:	1/1			
PLOT SCALE:	1/8"=1'-0"			
REV.	DESCRIPTION	DATE	BY	SOFTWARE



MILBANK SYSTEMS
INCORPORATED
1165 S. 28TH ST.
N. KANSAS CITY, MO. 64120

1/1



ELEVATED CURE OVEN

NOTES:

- 1) CONVEYOR DESIGN SPEED @ 7 FPM
- 2) ALL HORIZONTAL TURNS ARE 36" RADIUS
- 3) UNIBILT ENCLOSED TRACK CONVEYOR
- 4) ALL VERTICAL CURVES ARE 24" RADIUS @ 20'
- 5) DESIGN PRODUCTION RATE 7500 LB/HR

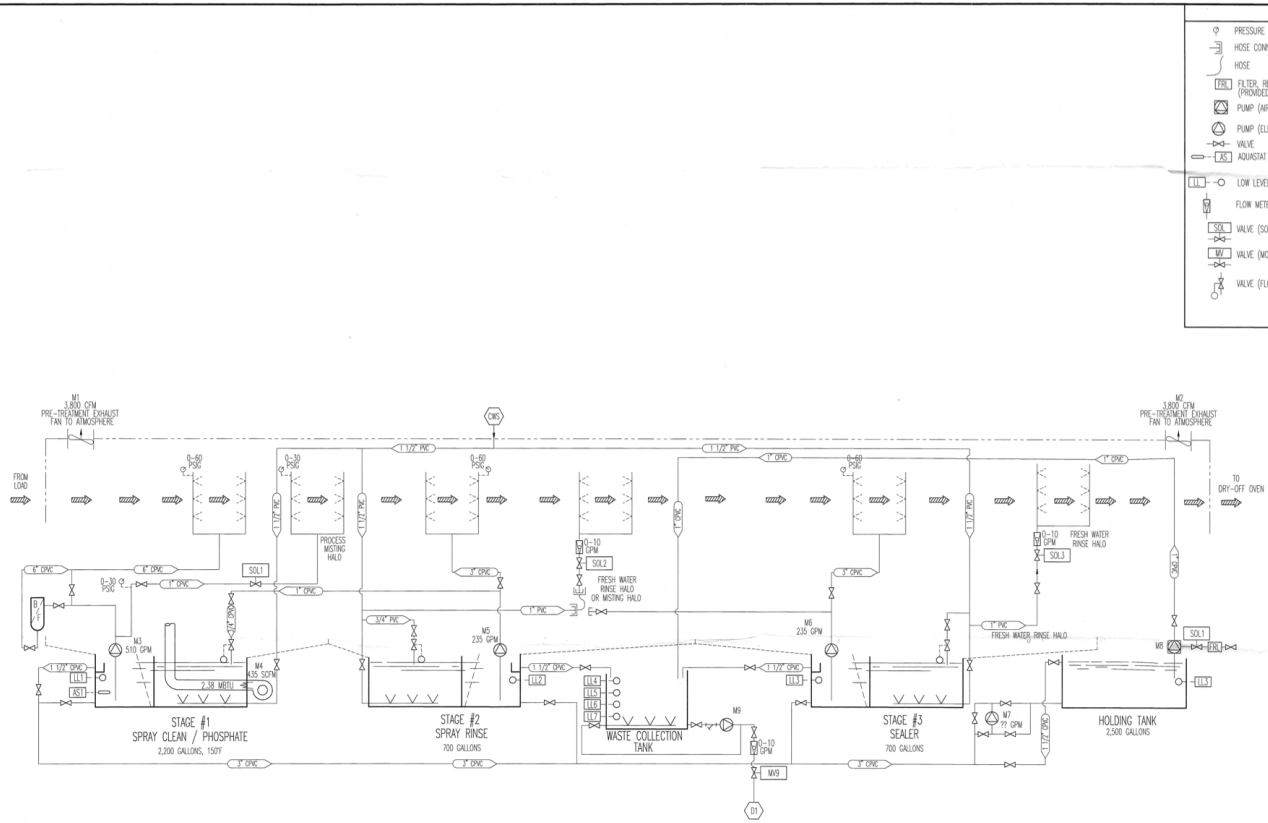
— = CONVEYOR
 - - - = CONVEYOR UNDER MEZZANINE



GENERAL LAYOUT			
COMPANY			
DRAWN BY C. MURRAY	CHECKED BY	DATE 11-30-96	SHEET NO. 1
PROJECT NO. 97-2924	DRAWING NO. 97-2924-001		

CAD USER INFO			
FILE NAME:	2924D00C		
PLOT:	CL		
PLOT SCALE:	125=12		
REV	DESCRIPTION	DATE	BY
			SOFTWARE: AUTOCAD R13





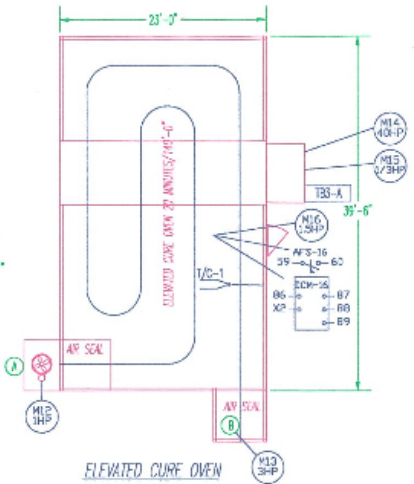
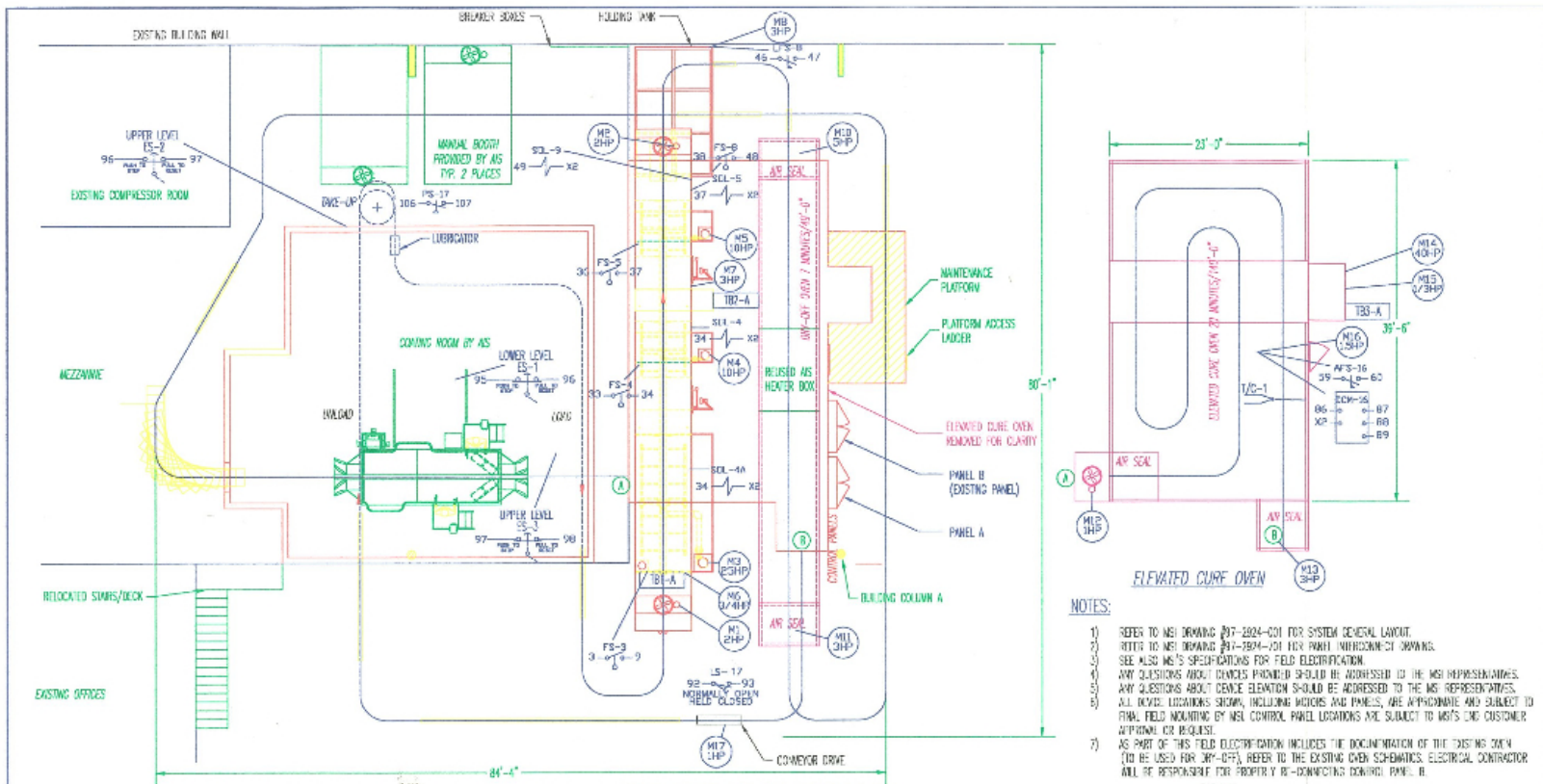
PRETREATMENT

LEGEND

- PRESSURE GAUGE
- HOSE CONNECTION
- HOSE
- FILTER, REGULATOR, LUBRICATOR (PROVIDED BY CUSTOMER)
- PUMP (AIR MOTOR)
- PUMP (ELECTRIC MOTOR)
- VALVE
- AXIostat
- LOW LEVEL SWITCH
- FLOW METER
- VALVE (SOLENOID OPERATED)
- VALVE (MOTOR OPERATED)
- VALVE (FLOAT OPERATED)
- TANK FLOOR WASH-DOWN MANIFOLD
- SPRAY NOZZLES
- TUBAXIAL FAN
- FILTER SCREENS
- BAG FILTER
- TUBE FIRED BURNER
- CITY WATER SUPPLY THRU BACKFLOW PREVENTER (PROVIDED BY CUSTOMER)
- DRAIN CONNECTION (PROVIDED BY CUSTOMER)
- PIPE SIZE/MATERIAL & FLOW DIRECTION
PVC = SCH. 80
CPVC = SCH. 80

FLOW DIAGRAM

CAD USER INFO FILE NAME: 2924.dwg PLOTTER: 2500-2500 PLOT SCALE: 1:1 DATE: 08/21/98 AUTHOR: JES			MSI MERRILL SYSTEMS INCORPORATED 7000 BELLEVUE AVENUE, SUITE 100, BELLEVUE, WA 98003		DRAWN BY: H. SAGS CHECKED BY: [blank] DATE: 8-31-98	SHEET NO.: 97-2924 DRAWING NO.: 2924-601 TOTAL SHEETS: 1
PROJECT: [blank] DESCRIPTION: [blank]			PROJECT NO.: 97-2924 DRAWING NO.: 2924-601		DATE: 8-31-98	SHEET NO.: 1



- NOTES:**
- 1) REFER TO MSJ DRAWING 97-2924-001 FOR SYSTEM GENERAL LAYOUT.
 - 2) REFER TO MSJ DRAWING 97-2924-001 FOR PANEL INTERCONNECT DRAWINGS.
 - 3) SEE ALSO MSJ'S SPECIFICATIONS FOR FIELD ELECTRIFICATION.
 - 4) ANY QUESTIONS ABOUT DEVICES PROVIDED SHOULD BE ADDRESSED TO THE MSJ REPRESENTATIVES.
 - 5) ANY QUESTIONS ABOUT DEVICE ELEVATION SHOULD BE ADDRESSED TO THE MSJ REPRESENTATIVES.
 - 6) ALL DEVICE LOCATIONS SHOWN, INCLUDING MOTORS AND PANELS, ARE APPROXIMATE AND SUBJECT TO FINAL FIELD MEASUREMENT BY MSJ. CONTROL PANEL LOCATIONS ARE SUBJECT TO VISITS AND CUSTOMER APPROVAL FOR RELOCATE.
 - 7) AS PART OF THIS FIELD ELECTRIFICATION INCLUDES THE DOCUMENTATION OF THE EXISTING OVEN (TO BE USED FOR "AS-BUILT"). REFER TO THE EXISTING OVEN SCHEMATICS. ELECTRICAL CONTRACTOR WILL BE RESPONSIBLE FOR PROPERLY RE-CONNECTING CONTROL PANEL B.

TERMINAL BOX INFORMATION
NOTE: EACH LINE REPRESENTS SEPARATE CONDUIT

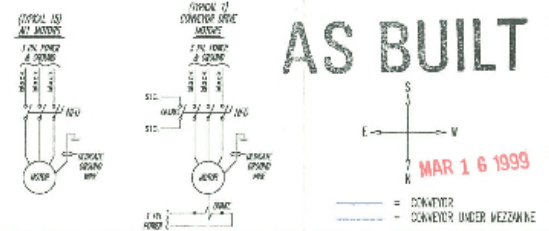
TERMINAL BOX #	QUANTITY, COLOR & TYPE OF WIRE	PANEL	OTHER CONNECTIONS
TB-1-A	18 RED 14 ga. THHN, 1 WHITE 14 ga. THHN, 1 GREEN 14 ga. THHN	A	NA
TB-2-A	12 RED 14 ga. THHN, 1 WHITE 14 ga. THHN, 1 GREEN 14 ga. THHN	A	NA
TB-3-A	18 RED 14 ga. THHN, 1 WHITE 14 ga. THHN, 1 GREEN 14 ga. THHN	A	NA
TB-4-A	1 SHIELDED CABLE (2 CONDUCTORS)	A	NA

THIS TABLE FOR ESTIMATION REFERENCE ONLY
MOTOR/DEVICE ELEVATION INFORMATION
NOTE: ANY UNLISTED DEVICES/MOTORS ARE ASSUMED TO BE AT FLOOR LEVEL.

DESCRIPTION	ELEV. FROM FLOOR	PANEL
CONVEYOR DRIVE	24 FT	A
CONVEYOR TAKE-UP	9 FT	A
OPERATOR STATIONS	4 FT	A
DRY OFF OVEN AIR SEALS	14 FT	A
CURE OVEN RIDER, BLOWER/CONVEYOR BLOWER	27 FT	A
CURE OVEN AIR SEALS/EXHAUST	25 FT	A
WASHER EXHAUST FANS	13 FT	A
WASHER TANK EXTENSION PUMP MOTORS & DEVICES	5 FT	A

DEVICE LEGEND

SYMBOL	DESCRIPTION	QTY
(Symbol)	AIR FLOW SWITCH	1
(Symbol)	AIR PRESSURE SWITCH	1
(Symbol)	EMERGENCY STOP (PUSH/PULL)	3
(Symbol)	FLYBY SWITCH	3
(Symbol)	LIMIT SWITCH	1
(Symbol)	LIQUID FLOW SWITCH	1
(Symbol)	480V 3P MOTOR TYP. UNLESS NOTED BY MOTOR	16
(Symbol)	SCHEMATIC	2
(Symbol)	RE-MODULE (SEPARATE CONDUIT)	1



Control and Drive Systems, Inc.
MSJ/MSR No. 99024 L.D.M.C.

MSI MILBANK SYSTEMS INCORPORATED
255 BUCKINGHAM
K. GARRETT, JR., MD. 64103

FIELD ELECTRICAL DEVICE LAYOUT

DATE: 11-16-93
DRAWN BY: P/DMG
PROJECT NO.: 97-2924
SHEET NO.: 97-2924-700

NO.	REV.	DESCRIPTION	DATE
1	1	ISSUED FOR PERMIT	11-16-93
2	1	ISSUED FOR CONSTRUCTION	11-16-93