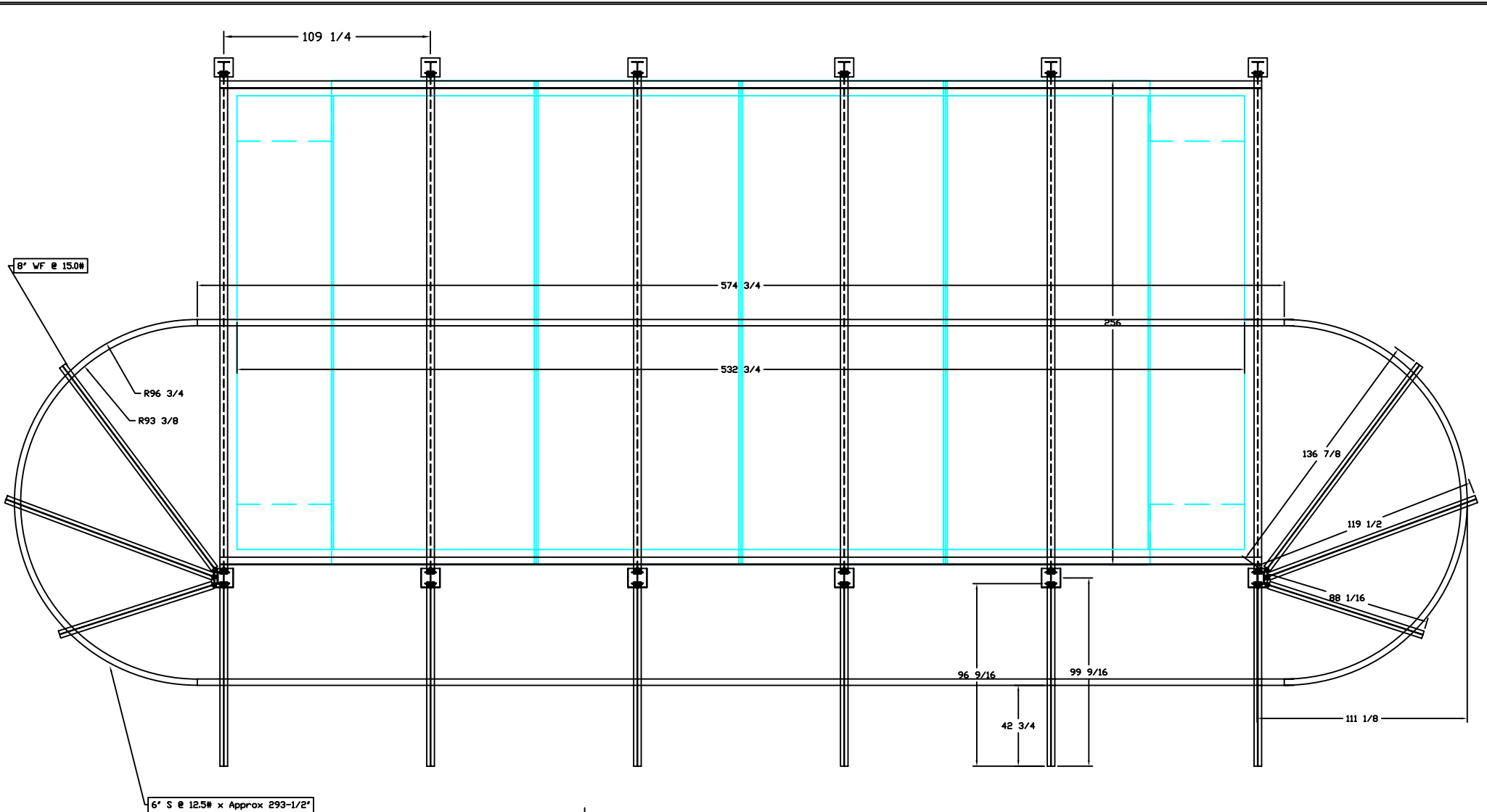
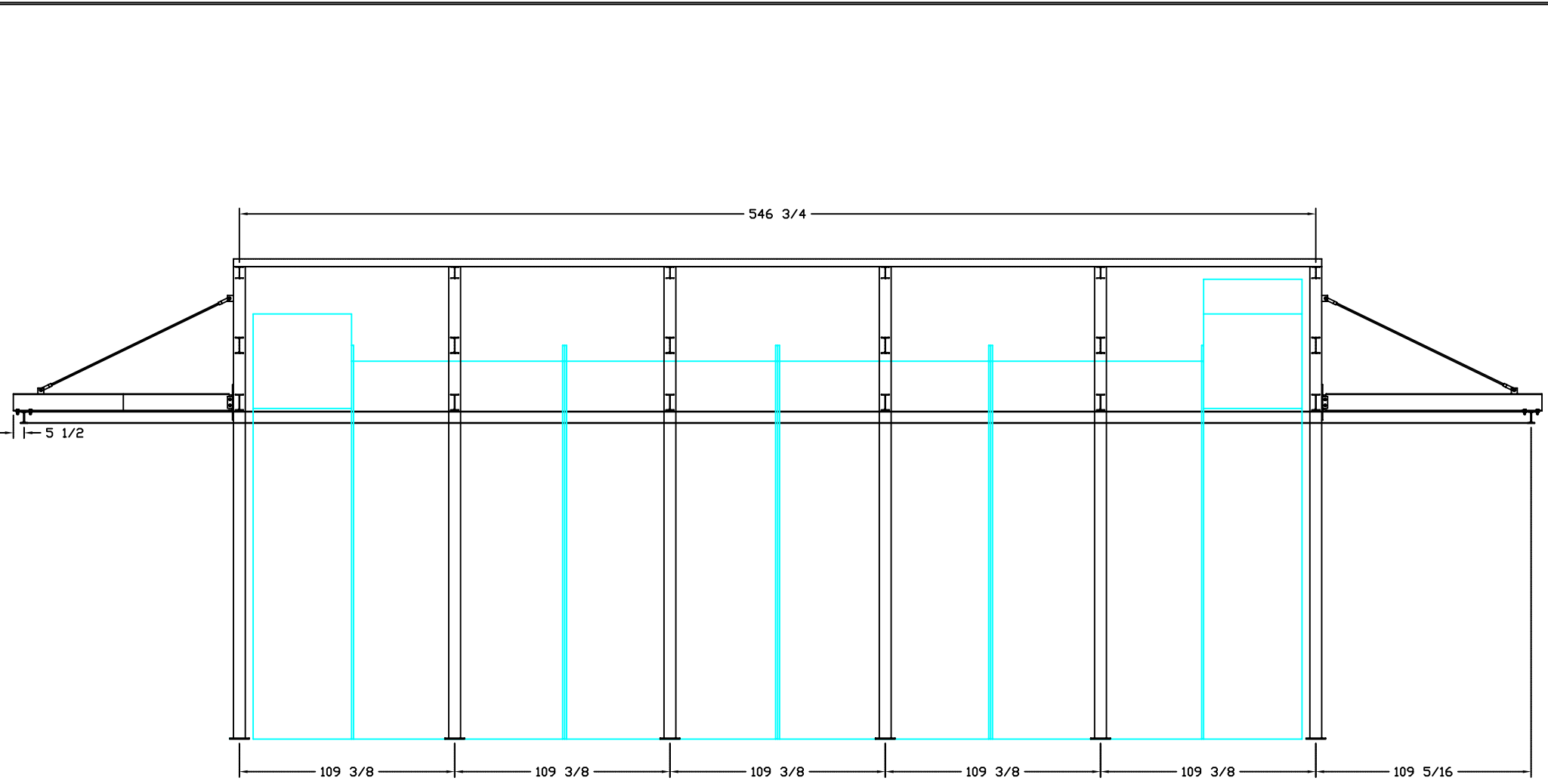


CTN	Drawn By	Dean Boeck
		I. CO.
Title		
Monorail - End Elevation		
Date	8/22/08	Drawing Number
Scale		STM-PAINT-002



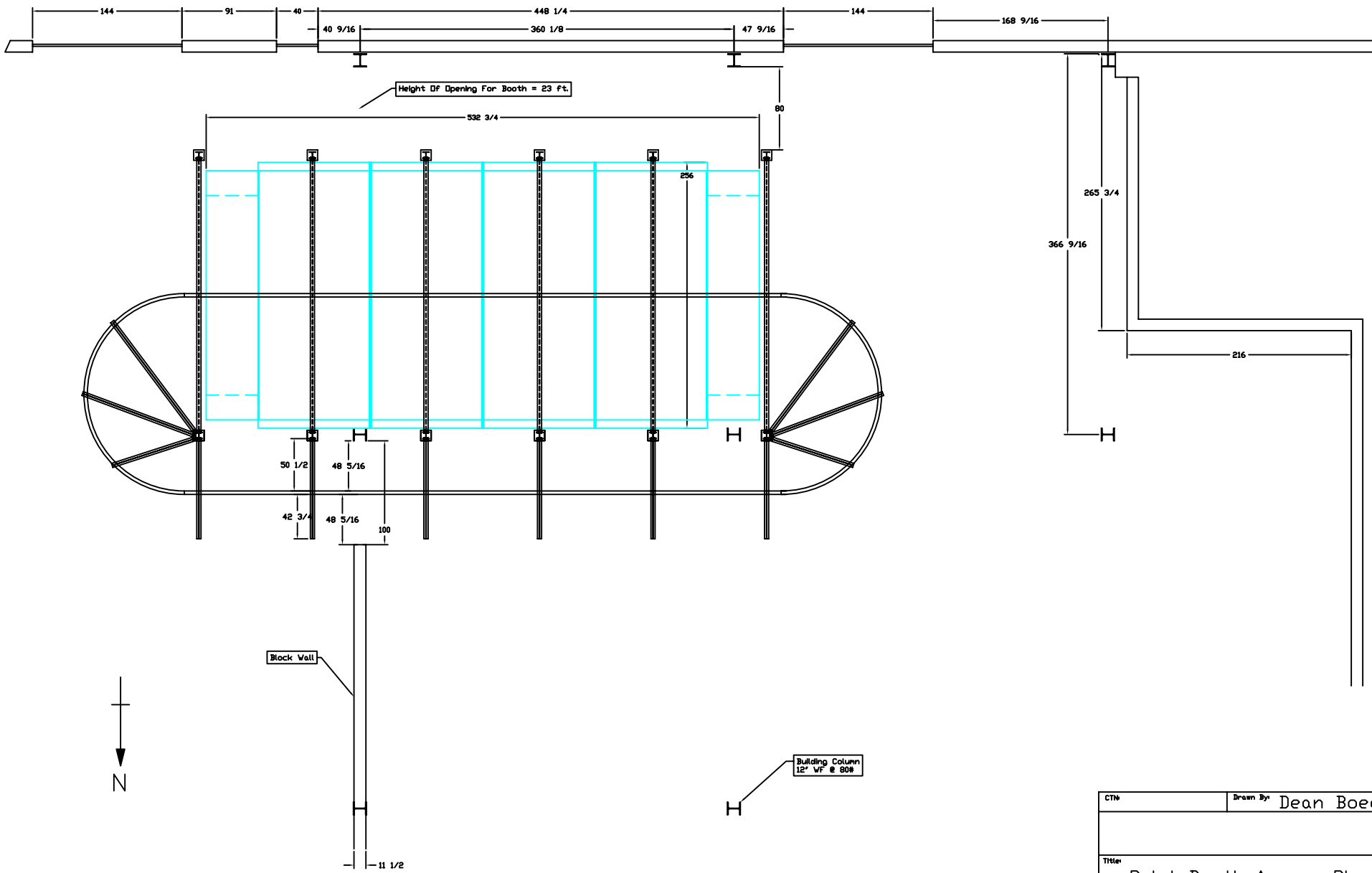
Notes:
 Total Design Load For Monrail = 50,000 Lbs.
 Floor Design Of Building =

CTW	Drawn By	Dean Boeck
		CO.
Title Monorail - Plan View		
Date:	8/22/08	Drawing Number
Scale:		STM-PAINT-004



E ←

CTN	Drawn By	Dean Boeck
Title		
Monorail - Side Elevation		
Date	8/22/08	Drawing Number
Scale		STM-PAINT-003



CT#	Drawn By	Dean Boeck
Title		
Paint Booth Area - Plan View		
Date	8/22/08	Drawing Number
Scale		STM-PAINT-006

APPROVAL OF DRAWINGS

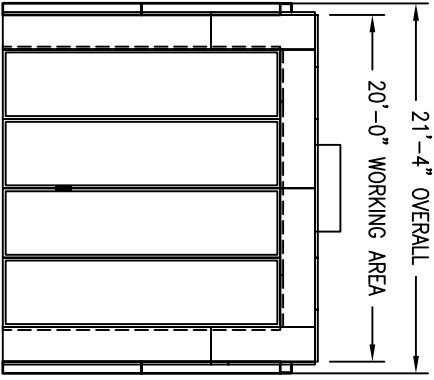
Signed drawing(s) is a statement that the dimensions, design and application have been reviewed and are approved for fabrication.

- Approved as submitted
- Approved as noted
- Disapproved – Please resubmit

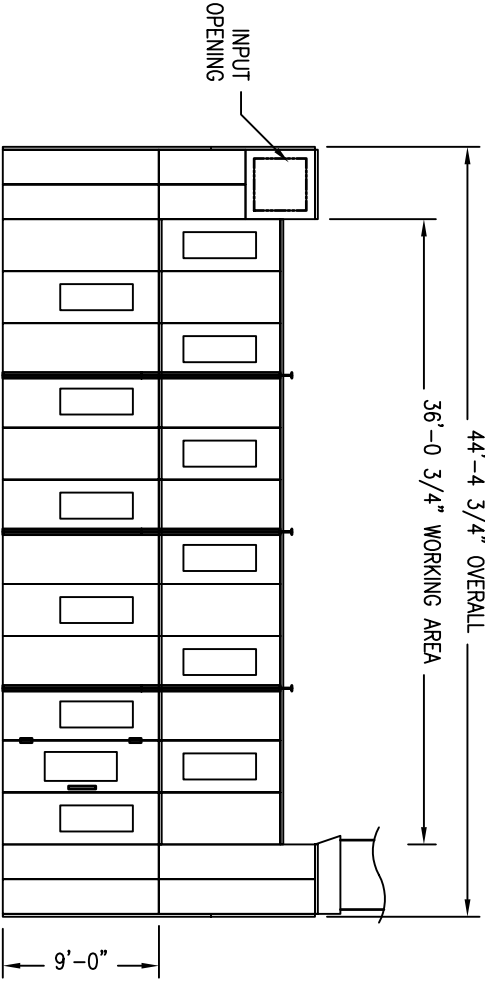
NOTE: MANUFACTURE OF EQUIPMENT WILL BE SCHEDULED AFTER RECEIPT OF APPROVED DRAWINGS.

AUTHORIZED SIGNATURE: _____

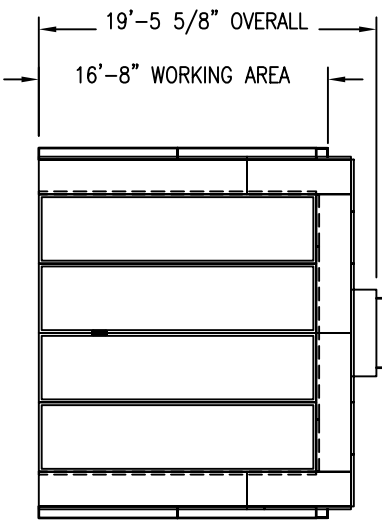
FRONT ELEVATION



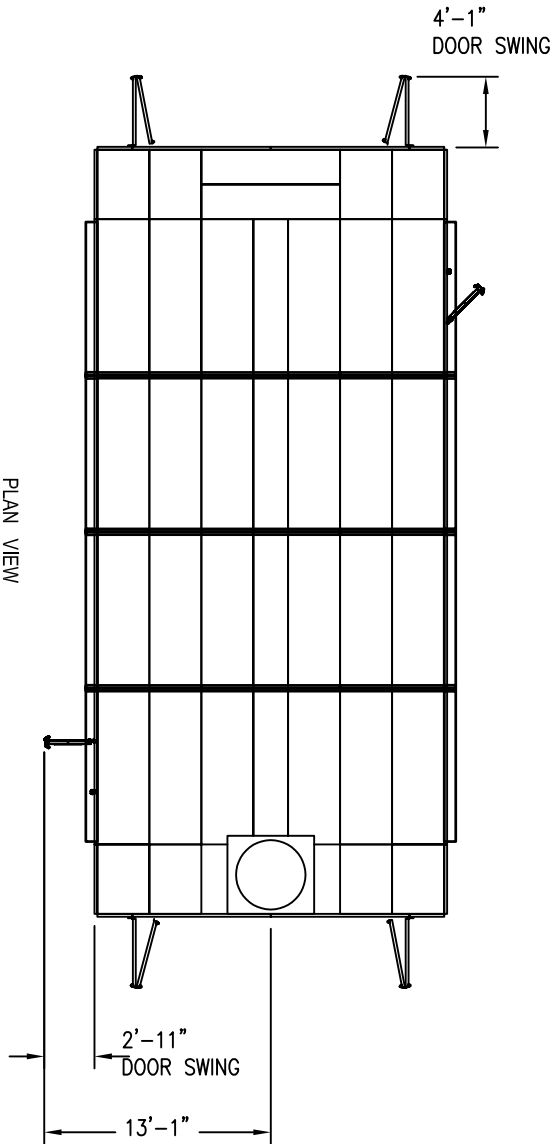
RH SIDE ELEVATION



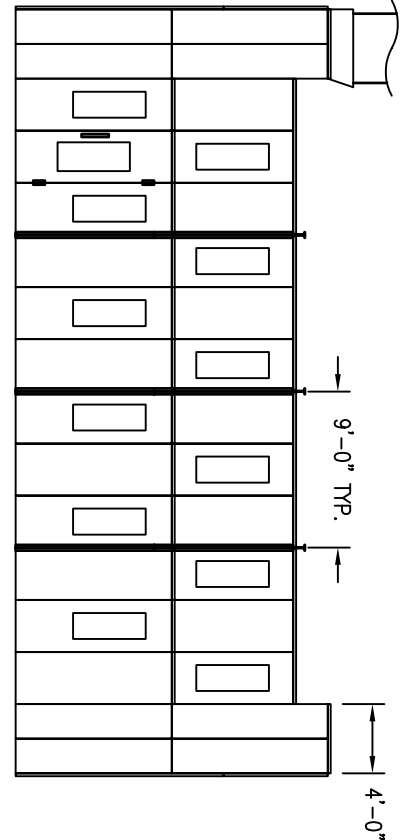
REAR ELEVATION



PLAN VIEW



LH SIDE ELEVATION



SPECIFICATIONS PER BOOTH

TWENTY -FOUR	6-TUBE DUAL VOLTAGE, CLASS 1 DIV. 2, INSIDE ACCESS, FLUORESCENT LIGHT FIXTURES IN BOOTH WALLS.
ONE	4-SLAB PRODUCT ENTRY DOOR (15'-11" x 15'-9" CLEAR OPENING)
ONE	4-SLAB PRODUCT EXIT DOOR (15'-11" x 15'-9" CLEAR OPENING)
TWO	PERSONNEL ACCESS DOORS (32" x 103" CLEAR OPENING)

POWER REQUIREMENTS

COMPRESSED AIR : 100 P.S.I. @ 15 SCFM DOES NOT INCLUDE AIR REQUIREMENTS FOR SPRAY PAINTING
7-1/2HP EXHAUST MOTOR 480V 1PH 10.2 FLA
ELECTRIC FOR LIGHTS : 120 VAC/1 PH/36 FLA or 277 VAC/1 PH/15.4 FLA

CUSTOMER CONCRETE RESPONSIBILITIES:

1. CONTRACTOR SHALL VERIFY ALL DIMENSIONS, FLOOR ELEVATIONS, ETC. WITH THE GLOBAL FINISHING SOLUTIONS DISTRIBUTOR, PRIOR TO ANY COMMENCED WORK
2. ALL HORIZONTAL CONCRETE SURFACES MUST BE LEVEL (NO PITCH)
3. REINFORCED CONCRETE AS REQUIRED FOR WEIGHT TO BE CARRIED. (MINIMUM 6,500 PSI RECOMMENDED)

CONCEPT REVISION

REV.: 1	DATE: 12/08/2008	BY: TM	REV.: 5	DATE:	BY:
POWER REQUIREMENTS AND CONCRETE RESPONSIBILITIES ADDED.					
REV.: 2	DATE:	BY:	REV.: 6	DATE:	BY:
REV.: 3	DATE:	BY:	REV.: 7	DATE:	BY:
REV.: 4	DATE:	BY:	REV.: 8	DATE:	BY:



BARRIE, ONTARIO, CANADA
MONTERREY, NUEVO LEON, MEXICO
DALLAS, TEXAS, USA
OSSEO, WI, USA
PHONE: 1-800-468-5872 or 1-800-848-8738

GLOBAL FINISHING SOLUTIONS™

IMPORTANT NOTE: This print is the confidential property of Global Finishing Solutions L.L.C. It is not to be used or reproduced in any manner, nor submitted to other parties for examination without the prior approval of Global Finishing Solutions L.L.C.

© GLOBAL FINISHING SOLUTIONS L.L.C. 2003

WORK ORDER NUMBER DRAWING NUMBER PCD362016-GA-1	SCALE NONE DATE 11/08/2008	DRAWN BY DM/TM REVIEWED BY
DESCRIPTION GENERAL ARRANGEMENT DRAWING PRESSURIZED CROSSDRAFT BOOTH	APPROVED BY	SHEET 1 of 1
CUSTOMER for		