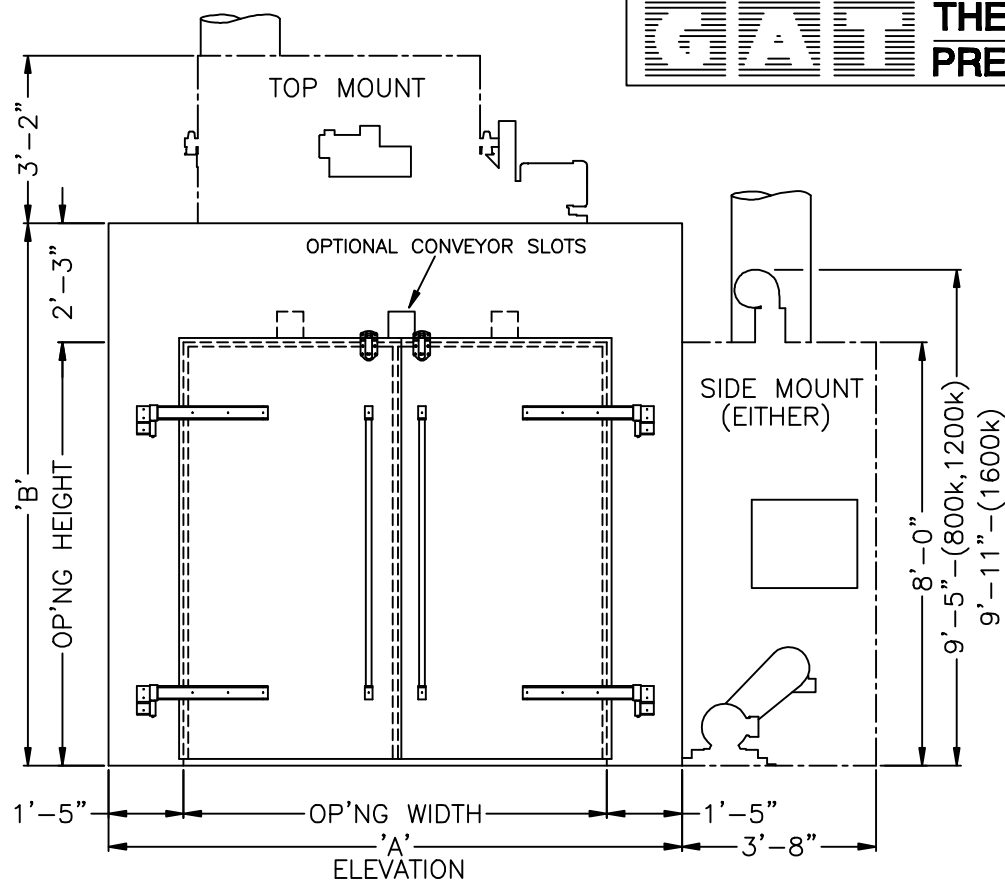




**THE LEADER IN OVEN DESIGN...
PRESENTS A COMPLETE NEW LINE OF BATCH OVENS**

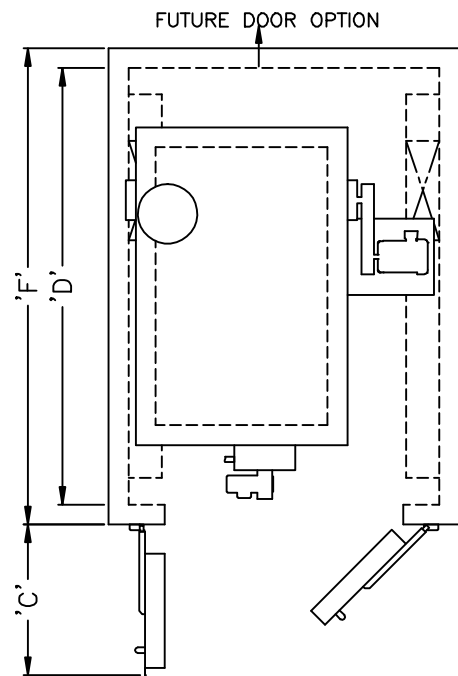


| BASE MODEL | OP'NG WIDTH | OP'NG HGT. | DIM. 'A' | DIM. 'B' | DIM. 'C' |
|------------|-----------------|------------|----------|----------|----------|
| 0606 | 6'-0" x 6'-8" | | 8'-10" | 8'-11" | 3'-10" |
| 0808 | 8'-0" x 8'-0" | | 10'-10" | 10'-3" | 4'-10" |
| 1010 | 10'-0" x 10'-0" | | 12'-10" | 12'-3" | 5'-10" |

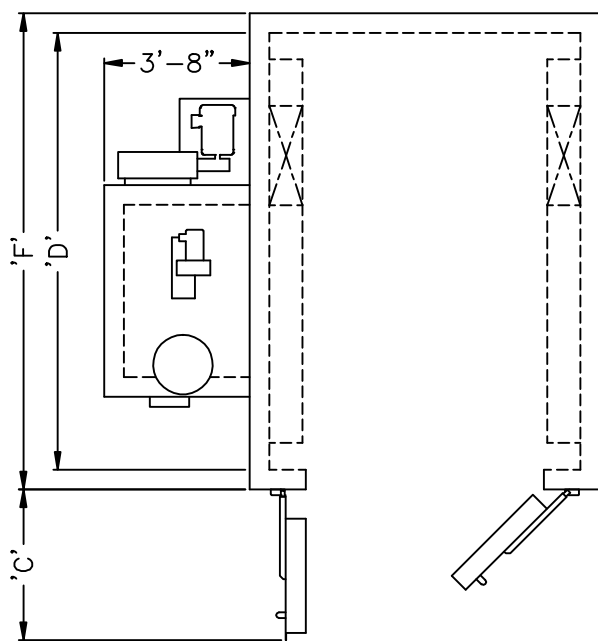
| WORK DEPTH | DIM. 'D' | DIM. 'E' | DIM. 'F' |
|------------|----------|----------|----------|
| 10'-0" | 11'-0" | 10'-1" | 12'-0" |
| 14'-0" | 15'-0" | 14'-1" | 16'-0" |
| 18'-0" | 19'-0" | 18'-1" | 20'-0" |
| 22'-0" | 23'-0" | 22'-1" | 24'-0" |
| 26'-0" | 27'-0" | 26'-1" | 28'-0" |
| 30'-0" | 31'-0" | 30'-1" | 32'-0" |

| BASE MODEL | #'S/HR. STEEL | | | | OPERATING COST PER HOUR |
|------------|--------------------|--------|--------|-------|-------------------------|
| | GALS/BATCH SOLVENT | | | | |
| | 200F | 300F | 400F | 500F | |
| 6-6-X* | 18,748 | 8,257 | 4,326 | 2,253 | \$4.99/HR |
| | 1.37 | .93 | .72 | .56 | |
| 8-8-X** | 41,939 | 20,680 | 12,848 | 8,852 | \$5.08/HR |
| | 1.30 | .96 | .64 | .40 | |
| 10-10-X** | 41,939 | 20,680 | 12,848 | 8,852 | \$5.08/HR |
| | 1.30 | .96 | .64 | .40 | |

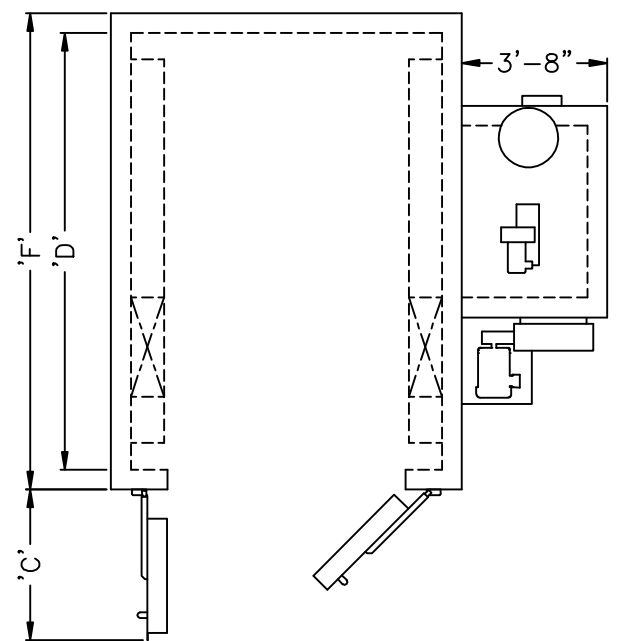
* - WITH .8 MBTU BURNER & 885 CFM EXHAUST (\$.06 KWH ELECTRIC & \$.60 THERM NAT. GAS)
 ** - WITH 1.6 MBTU BURNER & 1,360 CFM EXHAUST (\$.06 KWH ELECTRIC & \$.60 THERM NAT. GAS)



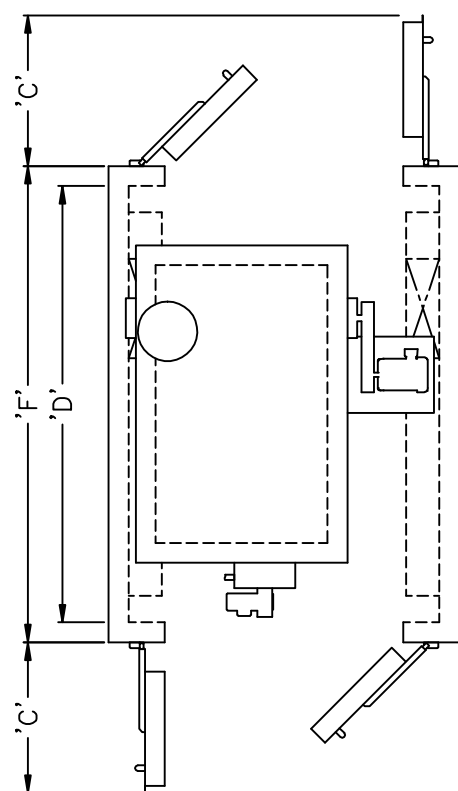
THS- TOP MOUNT HEATER SINGLE DOOR



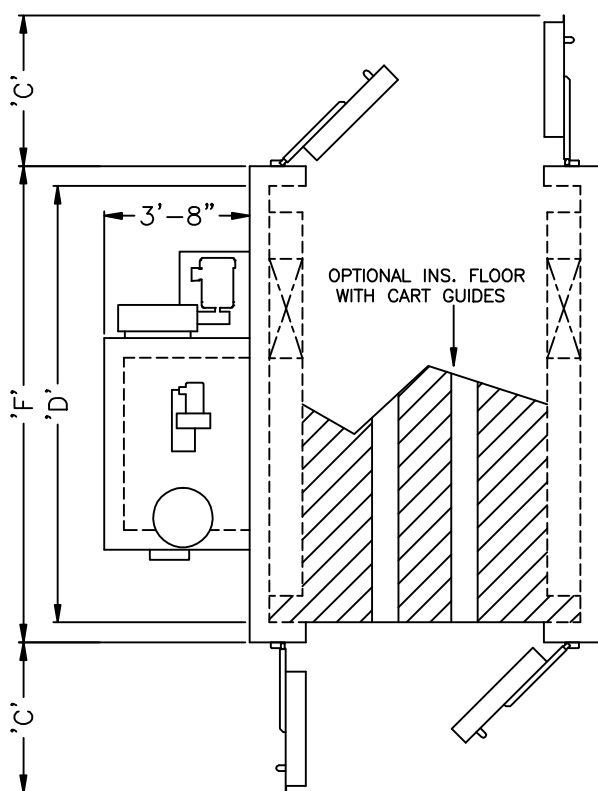
SSL- SIDE MOUNT HEATER-LEFT SINGLE DOOR



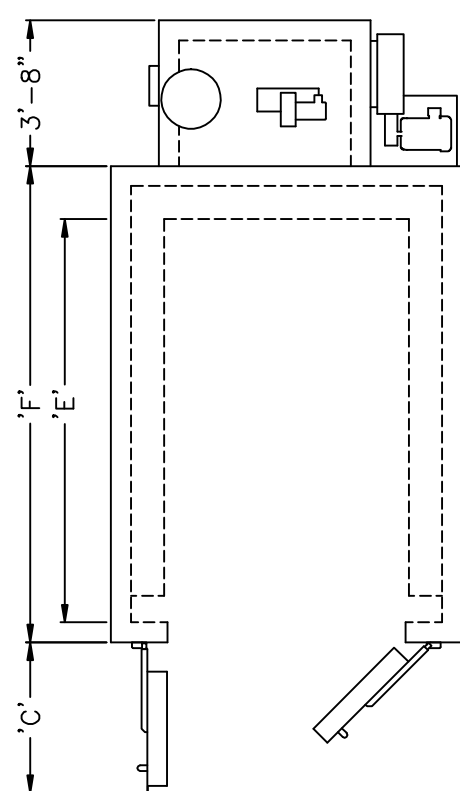
SSR- SIDE MOUNT HEATER-RGT. SINGLE DOOR



THD- TOP MOUNT HEATER DOUBLE DOOR



SHD- SIDE MOUNT HEATER DOUBLE DOOR



EHS- END MOUNT HEATER SINGLE DOOR